



# neelnox

LET  
THERE  
BE **DESIGN.**

## FEATURES

- Premium 304 Grade Stainless Steel
- Solid Mount Construction
- Concealed Installation Hardware
- Solid End Cap provided for side opposite to the door for a seamless look



Offset Door Handle

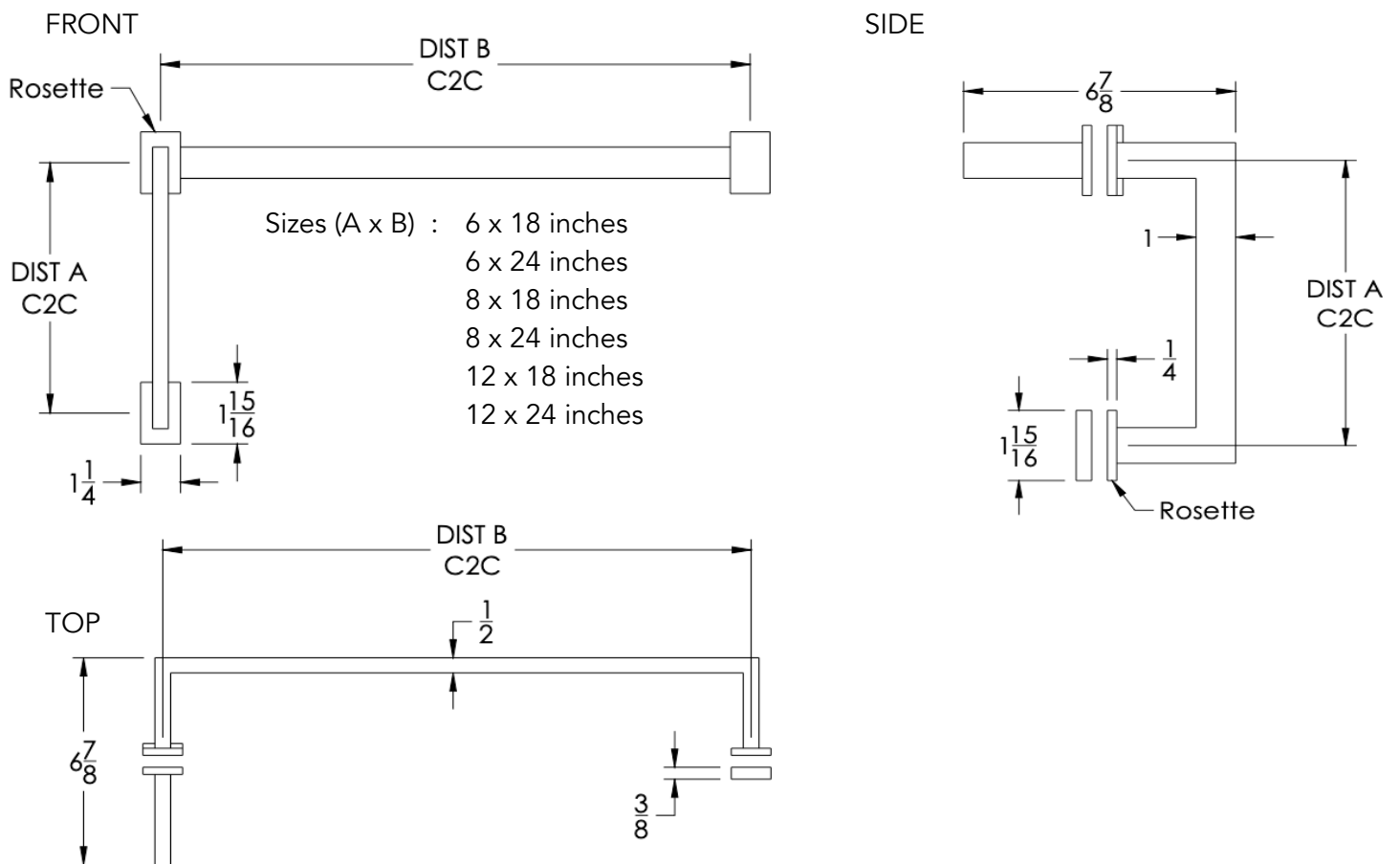
## COLLECTION ARGYLE

### OFFSET DOOR HANDLE

Model	Product	Finishes Available
ARG-OSDXX-XX-GR	Offset Door Handle	Multiple finishes available. Over 23 finishes to choose from.

FINISHES			
Polished (-P)	Antique Copper (-ACOP)	Polished Gold (-PGLD)	
Brushed (-B)	Polished Brass (-PBRS)	Brushed Copper (-BCOP)	
Brushed Gold (-BGLD)	Matte White (-WHT)	Brushed Rose Gold (-BRGD)	
Matte Black (-BLK)	Brushed Modern Bronze (-BMBRZ)	Brushed Black (-BRBLK)	
Oil Rubbed Bronze (-ORB)	Glossy White (-GWHT)	Polished Black (-PBLK)	
Brushed Brass (-BBRS)	Polished Rose Gold (-PRGD)	Antique Nickel (-ANKL)	
Brushed Bronze (-BBRZ)	Unlacquered Brass (-UBRS)	Black Nickel (-NKBL)	
Antique Brass (-ABRS)	Polished Nickel (-PNKL)		

C2C 'A'	C2C 'B'	Model
6"	18"	ARG-OSD6X18-GR
6"	24"	ARG-OSD6X24-GR
8"	18"	ARG-OSD8X18-GR
8"	24"	ARG-OSD8X24-GR
12"	18"	ARG-OSD12X18-GR
12"	24"	ARG-OSD12X24-GR



**Installation Notes:** Center to center hole drilling dimension are same as mentioned in column. Diameter of glass hole for installation is  $1\frac{1}{2}$ ". Standard hardware supplied can accommodate glass thicknesses  $\frac{1}{4}$ " to  $\frac{1}{2}$ ". Please contact us for custom hardware in case glass thickness exceeds  $\frac{1}{2}$ ".

NOTE: Dimensions in inches. Dimensions subject to change without notice.