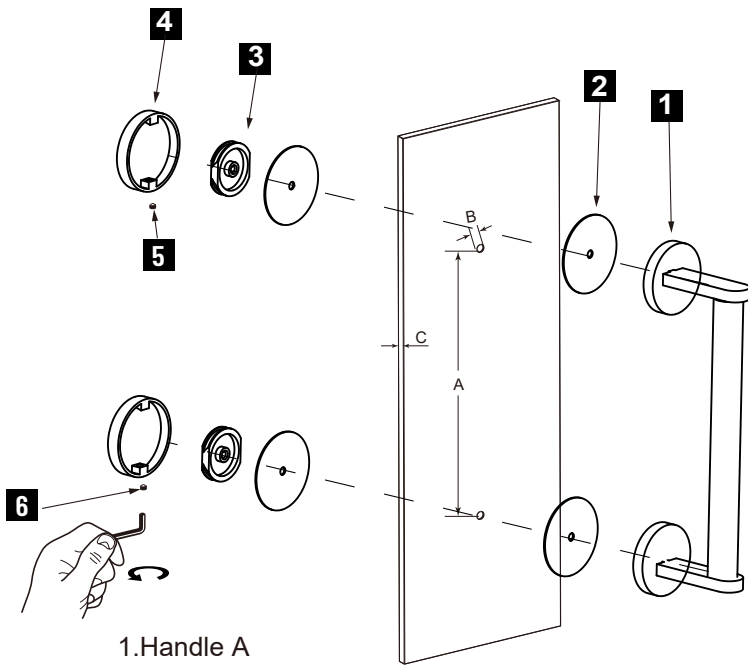


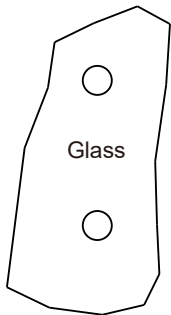
## FRANKFURT COLLECTION SINGLE SHOWER DOOR HANDLE

3137508/7512/7518/7524

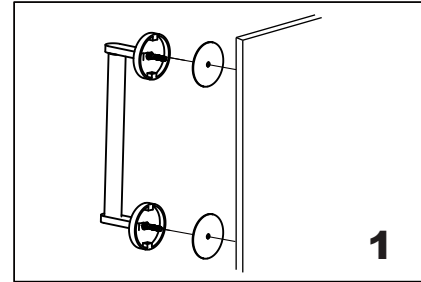


1. Handle A
2. Clear Gasket x 4
3. Fixing Bracket x 2
4. End Cap x 2
5. Set Screw M5 x 2
6. Allen Key 2.5mm x 1

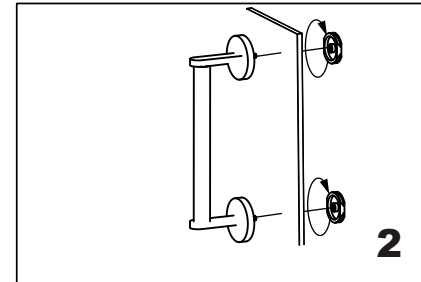
### GLASS INFO



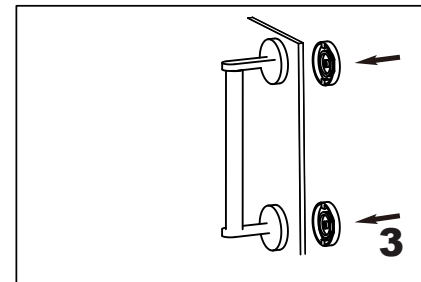
Glass Hole C-C Distance	
A	6"/152mm    6" Shower Door Handle
	8"/203mm    8" Shower Door Handle
	12"/305mm    12" Shower Door Handle
	18"/457mm    18" Shower Door Handle
	24"/610mm    24" Shower Door Handle
B	1/2"(10mm)    Glass Hole Diameter
C	6-12mm    Glass Thickness



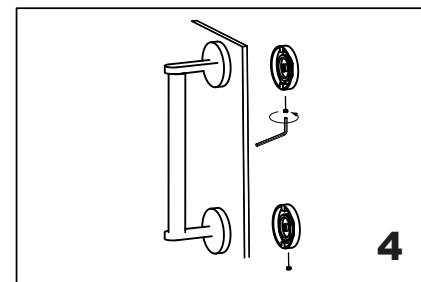
Install the handle A (bolt) through the glass holes, make sure the rubber gaskets are between handle & glass.



Screw in the fixing brackets into the handle bolts.



Add the end caps on the fixing brackets, make sure the set screws holes in the bottom.



Fix the set screws on the end caps, tighten it to avoid loose from fixing brackets.