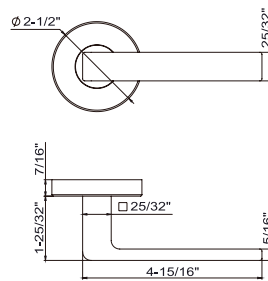


345 Tokyo



Material

Stainless Steel Levers and Escutcheons

Standard Finishes

- Satin Stainless Steel (630/US32D)
- Bright Polished Stainless Steel (629/US32)

Functions

Tubular Latch Set w/ RA, SE, GT, GS* Rose or w/ LA, SF Plate

- 2-3/8" Backset:
 Passage, TL2/TL4 = L61/L461
 Privacy, TL2/TL4 = L62/L462
 Half Passage, TL2/TL4 = L65/L465
 Privacy, TL2/TL4 & Privacy Bolt = L66/L466
- 2-3/4" Backset:
 Passage, TL2/TL4 = L71/L471
 Privacy, TL2/TL4 = L72/L472
 Half Passage, TL2/TL4 = L75/L475
 Privacy, TL2/TL4 & Privacy Bolt = L76/L476
- Single Dummy Left = DL
 Single Dummy Right = DR
 Full Dummy = DL + DR

Tubular Entry Set w/ Deadbolt & w/ LA, SF Plate

- 2-3/8" backset, Single Cyl, TL2/TL4 = C63/C463
 2-3/4" backset, Single Cyl, TL2/TL4 = C73/C473
 2-3/8" backset, Double Cyl, TL2/TL4 = C64/C464
 2-3/4" backset, Double Cyl, TL2/TL4 = C74/C474
- Dummy Entry = EDP
 Full Dummy Pair = DP

Door Thickness

1-3/8" to 1-3/4" (35mm to 44mm)
 Thick door kits available.

Features

- Concealed fixings
- Spring assisted chassis
- Same lever design with multiple escutcheons and functions to suit different applications

Mortise Set w/ RA, SE, GT, GS* Rose or w/ LA, SF Plate

- MC Mortise Backset: 2-3/4"
 Passage = MC701
 Privacy = MC722
 Storeroom = MC707
 Classroom = MC705
 Entrance = MC720
 Entry w/o Toggle = MC738
 Entry w/o Deadbolt = MC704
 Dummy = MDP

Multipoint Trim w/ BP, MU Plate

- Key to Lever Distance: 3-5/8" (92 mm)
 Passage = MA10
 Patio US Cylinder = MA15
 Entry US Cylinder = MA55
 Patio Euro Cylinder = MA25
 Entry Euro Cylinder = MA35
 Half Passage/Half Dummy = MA20
 Full Dummy = MADP

Tubular Handle Set w/ NY, MH Plate*

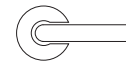
- 2-3/8" backset = C563
 2-3/4" backset = C573
 Dummy Entry = TDP

Mortise Handle Set w/ NY, ME, MH, BW Plate*

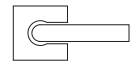
- 2-1/2" backset = MT620
 2-3/4" backset = MT720
 Dummy Entry = MTEDP

* Coming Soon

Escutcheon Options



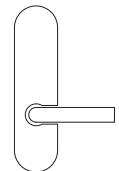
RA Rose
2-1/2" Dia.
(64mm Dia.)



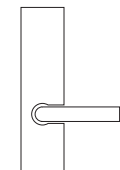
SE Rose
2-3/8" Sq.
(60mm Sq.)



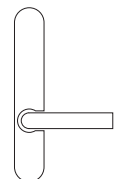
GT Rose
2-1/16" Dia.
(53mm Dia.)



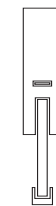
LA Plate
10-1/2" x 2-1/2"
(267 x 63mm)



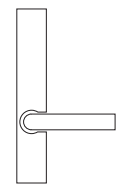
SF Plate
10-1/2" x 2-1/2"
(267 x 63mm)



BP Plate
10-1/2" x 1-1/8"
(268 x 42mm)



NY Plate
17-1/8" x 2-1/2"
(453 x 63mm)



MU Plate
10-1/2" x 1-5/8"
(267 x 42mm)

How to Order/Specify:

Rose/Plate	Lever	Function	Finish	Handing*	Other
RA	101	L61	32D	-	-

* Handing required on single dummy, entry, mortise, multipoint functions and custom set.