



## FEATURES

- Solid brass construction - **LEAD FREE**
- Single volume and temperature lever control
- Aerated water flow
- Press pop-up drain with overflow # ABDR00699
- Ceramic cartridge
- 3/8" connection
- 16" stainless steel braided supply hose

## FINISHES

- Standard
- polished chrome (pc)
- brushed nickel (bn)
- tiger bronze (tt)
- Custom
- 18 custom finishes available
- (ask your local Aquabress authorized dealer for details)

## WARRANTY

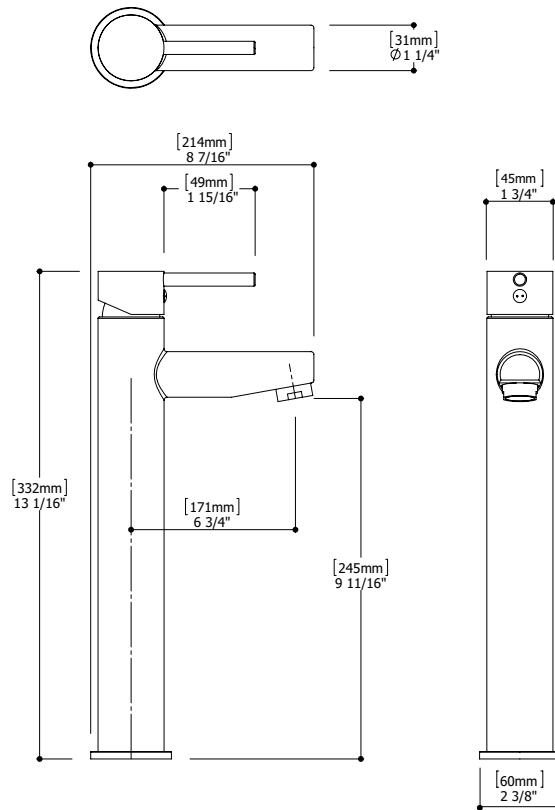
- Residential: Limited lifetime warranty to original purchaser
- Commercial: Two years warranty
- (Complete warranty available at [www.aquabress.com/warranty](http://www.aquabress.com/warranty))

## CODE & COMPLIANCE

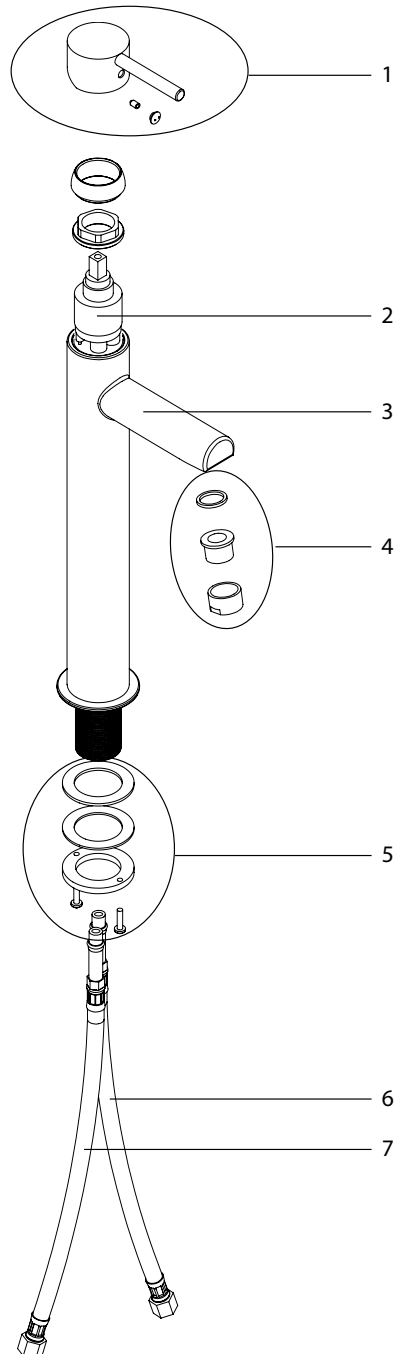
AB1953

## SPECS AT LARGE

- Overall spout projection: 8 7/16"
- Flow rate: 2 gpm
- CC spout projection: 6 3/4"
- Mounting hole: 1 3/8"
- Total faucet height: 13 1/16"
- Counter depth: 1 3/8"



EXPLOSION PARTS



Item	Code	Description
1	ABFC12875	Handle Kit
2	ABCA04075	35mm cartridge
3	ABFC61088	Faucet body
4	ABAE14007	Aerator kit

Item	Code	Description
5	ABFP09172	Retainer kit
6	ABFH09227	Cold water hose
7	ABFH09224	Hot water hose