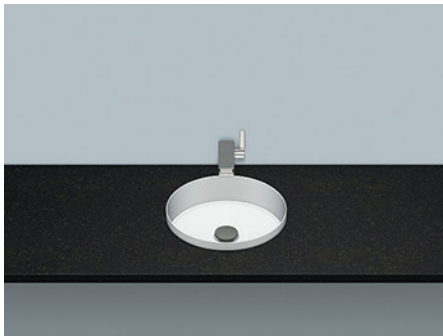


## A<sup>3</sup>form

### Technical data sheet



#### Built-in basins

**EB.KE325**

Article number: 2023503000

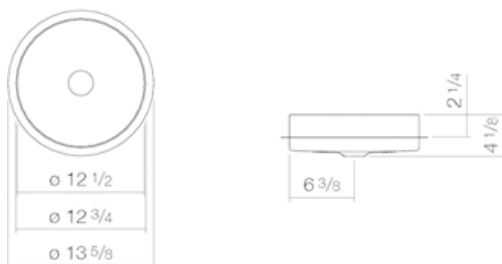
Design partner: sieger design



#### Features

Description	EB.KE325
Article number	2023503000
Standard colour	White
Special surfaces	White easy-clean (XXXX XXX 400) White antibacterial (XXXX XXX 401)
Construction	without faucet hole, without overflow
Special versions	special- or matt colour
Dimensions	12 3/4" ø
Material	Glazed steel
Net weight	9.04 lbs
Installation	for installation from below
Accessoires	Bottle trap SI.2, Bottle trap SI.3
Faucet information	Optimum point of impact approx. 3 3/4 – 5 1/8" from rear edge of basin.

Faucets with a vertical outlet and an aerator provide the optimum flow of water onto the surface below (angle of impact: 90°).



#### Text for invitation to tender

Built-in basin, round, 12 3/4" ø, height 4 1/8", of which 1" extending above the counter top, glazed inside and outside, optimised for installation in 1 1/8" counter tops, without faucet hole and overflow, including drain valve with chrome-plated cap

Brand: Alape

Model: EB.KE325